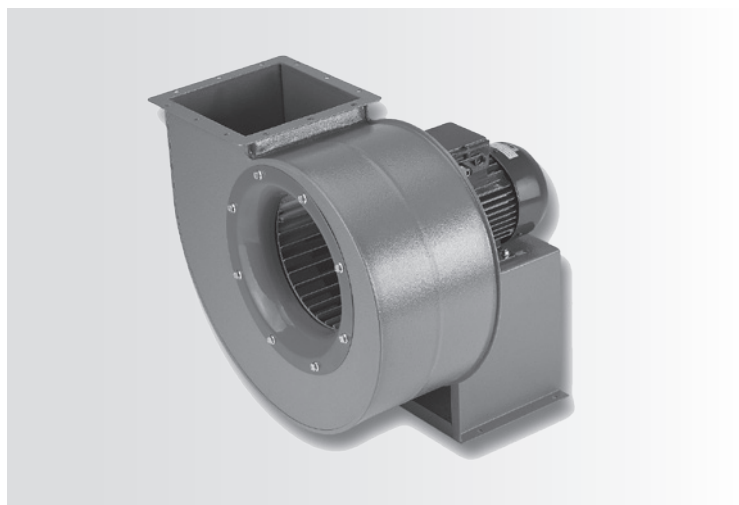


## CH Ventilatore centrifugo a semplice aspirazione



### Accessori

- Attacco per aspirazione
- RV... (inverter)

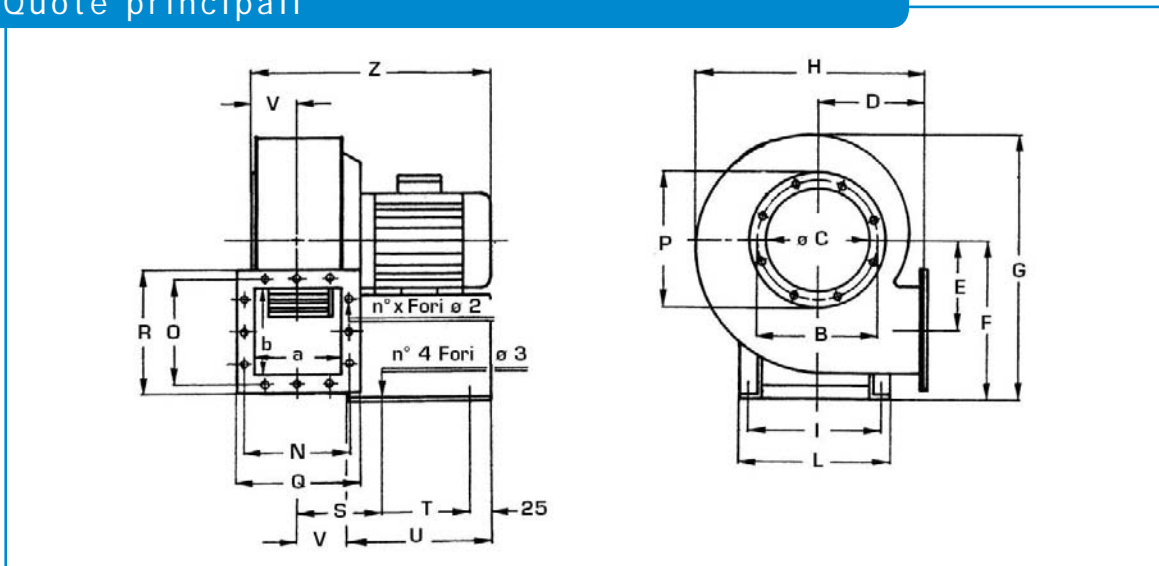
I ventilatori della serie CH sono adatti per covogliare aria e fumi privi di polveri. Questo tipo di ventilatore può lavorare fino a temperature di 60°C in servizio continuo.

### Tabella di selezione rapida

CH	Carico statico (Pa) / Portata (m³/h)												
	100	200	300	400	500	600	700	800	900	1000	1100	1200	1300
202T	3400	3250	3050	2950	2900	2550	2400	2300					
204T	1600	1200											
254T		3000	2200	1600									
256T	1800												
304T			5200	4700	3950	3100							
306T		2650											
354/AT			8400	7650	7000	6500	5900						
354/BT								5200	4250				
356T		5500	4000	2250									
358T	4650	2950											
404/AT						12000	11000	10250	9500	8500			
404/BT											5000		
406T		8000	6700	5600	4000								
408T		5500											
454/AT				16500	16000	15700	15000	14900	14000	13000	12300		
454/BT												11500	9500
456/AT		11500	10100	9000									
456/BT					7500	5500							
458/AT		7900											
458/BT			5550										

## Dimensioni

### Quote principali



### Tabella quote

CH	Dimensioni (mm)																				
	a	b	ØC	D	E	F	G	H	I	L	N	O	P	Q	R	S	T	U	V	Z	kg
200	160	160	200	145	140	260	425	340	230	255	192	192	260	215	215	135	135	210	86	390	22
250	200	200	250	175	180	320	525	420	230	255	232	232	310	255	255	155	155	250	106	440	26
300	240	240	300	205	220	380	625	500	230	255	272	272	362	295	295	175	175	250	126	500	36
350	280	280	350	235	260	445	735	580	290	320	318	318	412	345	345	200	225	305	146	590	60
400	320	320	400	265	300	505	835	660	340	370	358	358	462	385	385	220	300	380	166	680	110
450	360	360	450	295	340	565	935	740	390	420	400	400	515	425	425	240	360	440	188	850	200

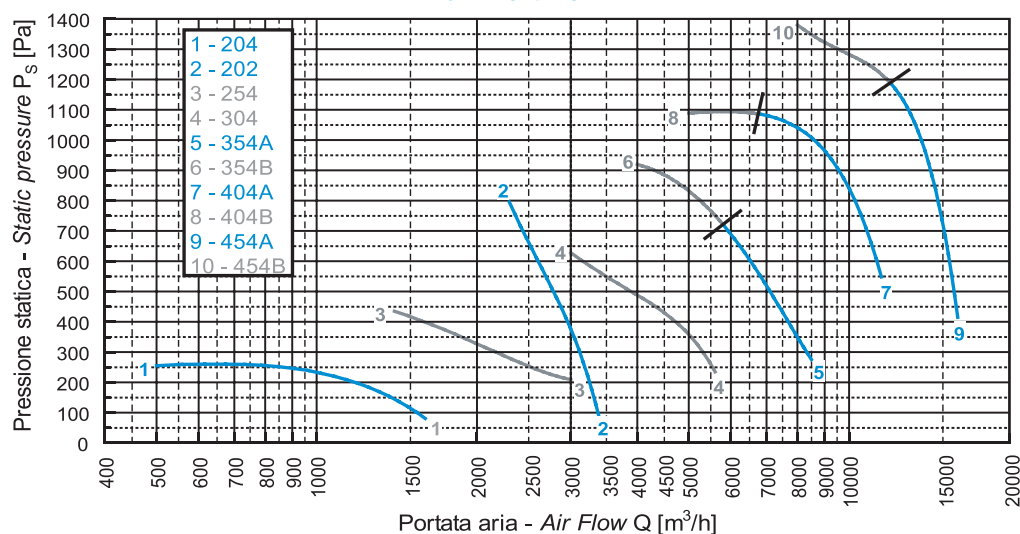
### Costruzione

Chiocciola in lamiera d'acciaio saldata verniciata, girante centrifuga con pale rivolte in avanti in lamiera d'acciaio, basamento per motore e ventilatore verniciato.

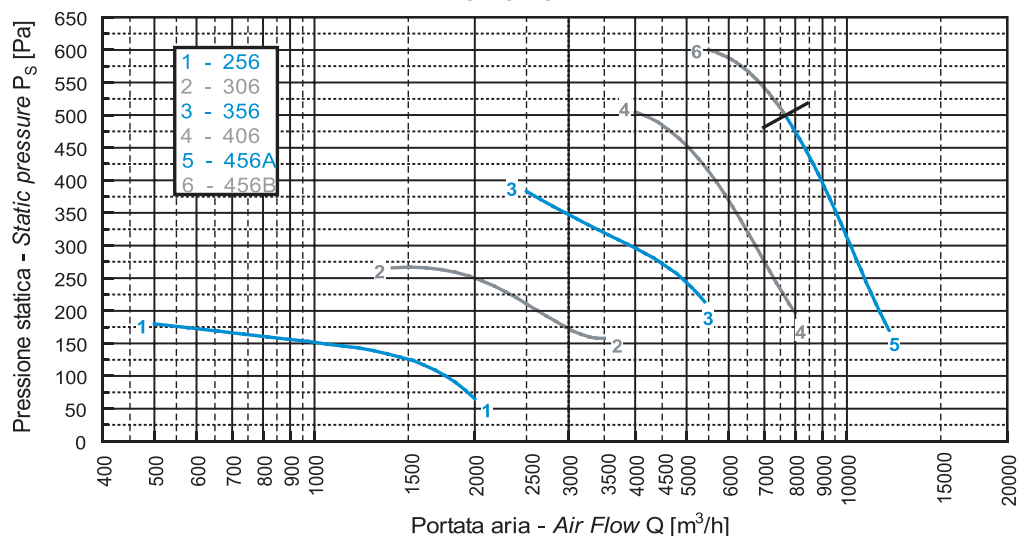
## Dati tecnici

### Curve di lavoro

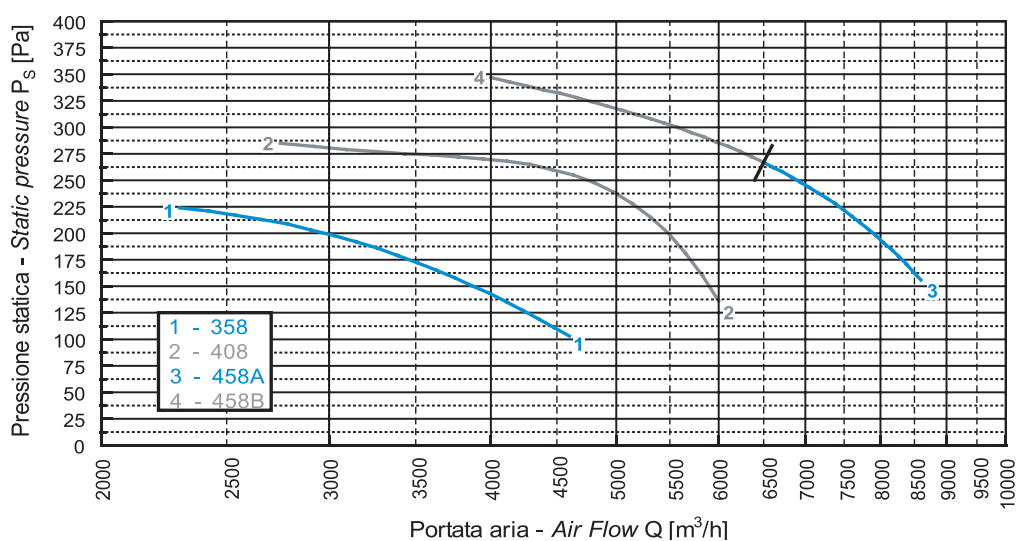
CH 2 e 4 POLI



CH 6 POLI



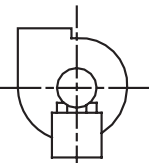
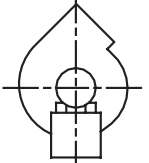
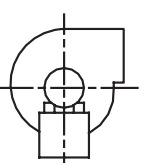
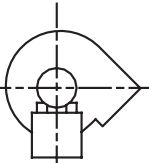
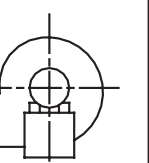

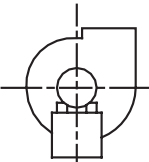
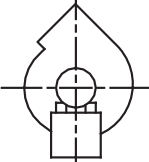
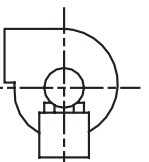
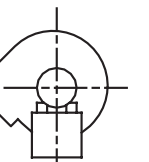
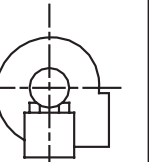
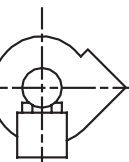
CH 8 POLI



## Dati tecnici

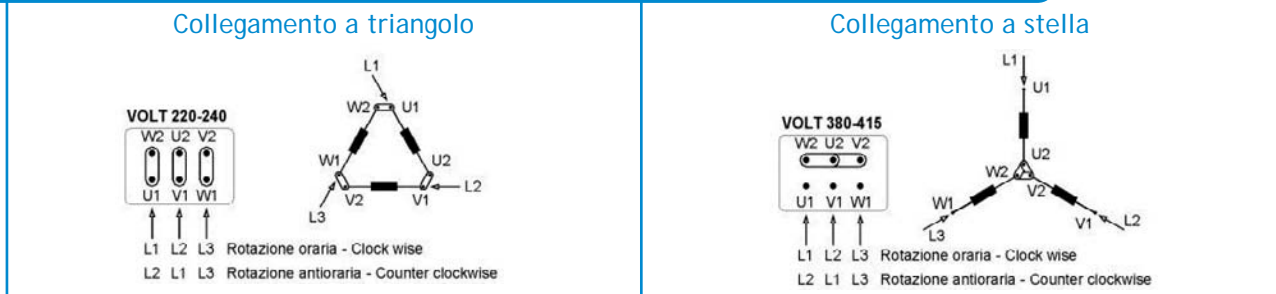
Serie	Giri/min (rpm)	Potenza (W)	Classe di protezione IP	Tensione (V)	Rumorosità (dB(A))	Peso (Kg)
202T	2800	1100	55/F	230/400	78	22
204T	1400	250	55/F	230/400	65	22
254T	1400	550	55/F	230/400	72	26
256T	900	180	55/F	230/400	62	26
304T	1400	1100	55/F	230/400	76	36
306T	900	370	55/F	230/400	68	36
354/AT	1400	3000	55/F	230/400	81	60
354/BT	1400	2200	55/F	230/400	81	60
356T	900	750	55/F	230/400	69	60
358T	700	370	55/F	230/400	65	60
404/AT	1400	5500	55/F	230/400	84	110
404/BT	1400	4000	55/F	230/400	84	110
406T	900	1500	55/F	230/400	77	110
408T	700	750	55/F	230/400	73	110
454/AT	1400	11000	55/F	230/400	88	200
454/BT	1400	7500	55/F	230/400	88	200
456/AT	900	3000	55/F	230/400	82	200
456/BT	900	2200	55/F	230/400	82	200
458/AT	700	2200	55/F	230/400	78	200
458/BT	700	1500	55/F	230/400	78	200

## Orientamento

					
RD0	RD45	RD90	RD135	RD270	RD315
					
LG0	LG45	LG90	LG135	LG270	LG315

## Collegamenti elettrici

### Schema morsetteria per motori trifase a 1 velocità



### Schema morsetteria per motori trifase a 2 velocità

